

CATALYST CARES

C A T A L Y S T F O R C H A N G E

A public cannabis community workshop.

C10-0000885-LIC



CATALYST CARES

CATALYSTFORCHANGE

OUR MISSION



- ❖ Catalyst Care's mission is to bring our "Weed for the People" philosophy beyond our stores and into our surrounding communities.
- ❖ Our core values: Labor, Community, Social Equity, Social Justice and Best Prices.
- ❖ Bring equity and accessibility to the cannabis industry, specifically to the communities most impacted by the War on Drugs and the criminalization of cannabis.



hemp

/hemp/

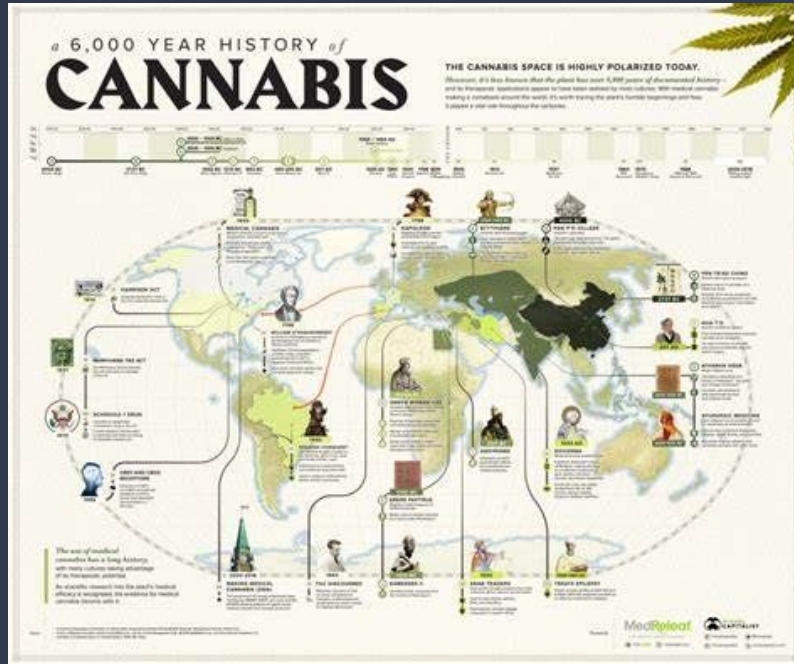
noun

1. the cannabis plant, especially when grown for fiber.
 - the fiber of the cannabis plant, extracted from the stem and used to make rope, strong fabrics, fiberboard, and paper.

- ❖ 10,000 BCE to 2,000 BCE
 - Hemp fibers used to make rope, clothing, paper, and medicine.
- ❖ 2,000 BCE to 1,000 BCE
 - Hinduism refers to cannabis as one of the five sacred plants
 - “Bhang” - recreational and medicinal properties
 - Known for producing “happiness and losing fears.”
- ❖ 1,550 BCE to 1,200 BCE
 - Egyption document - “Ebers Papyrus,” contains around 700 formulas and remedies that demonstrate their deep understanding of anatomy and pathology—cannabis included



Origins and Ancient History

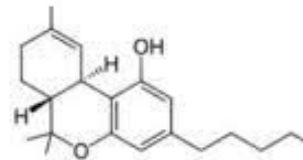


can·na·bis

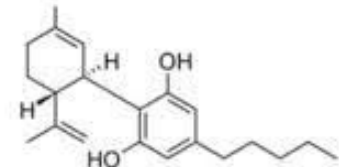
/ˈkænəbəs/

noun

1. a tall plant with a stiff upright stem, divided serrated leaves, and glandular hairs. It is used to produce hemp fiber and as a drug.
 - a dried preparation of the flowering tops or other parts of the cannabis plant, or a resinous extract of it (*cannabis resin*), smoked or consumed, generally illegally, as a psychoactive (mind-altering) drug.



Delta-9-tetrahydrocannabinol (THC)



Cannabidiol (CBD)

Cannabis in the United States



- ❖ 1848 - End of Mexican War
 - Brought marijuana culture to the U.S. making it a social activity.

- ❖ The Pure Food & Drug Act of 1906
 - Was the first of labeling laws in the country.
 - Ensured that all ingredients were found on a products label.
 - Did not criminalize cannabis but ensured transparency

- ❖ California Poison Act of 1907
 - Banned all sale of opium, cocaine, and morphine *without* a prescription: off the public market and into pharmacies.
 - This was the first full scale war in drugs.

- ❖ 1917 the Alcohol Prohibition
 - There was an unintentional outcome in the increase of cannabis use.

**WAR ON
DRUGS**



[CLICK HERE](#)

Legal Market Comes to California

CATALYST

#WEEDFORTHEPEOPLE

- ❖ 1990s - AIDS hits San Francisco hard
- ❖ 1991 - City of San Francisco allowed for medical use of marijuana without penalty
- ❖ 1996 - Prop 215 - decriminalizes cannabis for medical use
- ❖ 2003 - SB 420 - intro Medical ID Recommendation Cards
- ❖ 2015 - California Bureau of Medical Regulations - regulates cultivation, sales and offers pathway to distribution
- ❖ 2016 - Prop 64 - CA 21+ possess, process, transport, purchase, obtain or giveaway without compensation
 - Cities can implement business license regulations
 - Multi taxation system is established
- ❖ 2017 - Connected Santa Ana Opens
- ❖ 2020 - Belmont, Cherry, Bellflower, Santa Ana rebrand to Catalyst Cannabis Co.
- ❖ 2020 - Eastside opens amid COVID as the first Catalyst Cannabis Co.
 - 2020 additional stores across Southern California
- ❖ 2021 - Catalyst Cannabis Co - El Monte Opens

Cannabis is legal in California.



You can buy cannabis if you are:

- 18 or older with a physician's recommendation (medicinal use)
- 21 or older (adult use)

Cities and counties may have stricter laws about cannabis than the state. Go to your city or county website to learn about rules in your area.

There are different rules for medicinal users and adult users. Medicinal users:

- Have higher possession limits
- Can grow more plants at home if their physician recommends it
- Buy more cannabis each day if their physician recommends it

The Department of Cannabis Control (DCC) has [resources for medicinal patients](#) and their caregivers.

Responsible Use



❖ Where you can use cannabis

- Private property, but not in public places like restaurants or bars.
- You cannot:
 - Smoke cannabis where it's illegal to smoke tobacco
 - Smoke cannabis within 1,000 feet of a school, day care center or youth center while kids are present
- Property owners can ban the use of cannabis on privately-owned property. If you rent, read your rental agreement to see if there are any restrictions.
- Most hotels do NOT allow guests to use cannabis in their hotel room. Ask the reception desk about the hotel's policy to be sure. If you stay in a vacation rental, check with the property owner about the rules for your stay.
- Cannabis is still illegal under federal law, which means you also cannot:
 - Use or possess cannabis on federal lands, like national parks
 - Take cannabis across state lines

❖ Growing cannabis at home

- Grow up to 6 cannabis plants at home if 21+. If you turn the cannabis into a product, you cannot use volatile solvents like butane or propane.
- Some cities and counties - specific rules for home grows - permit requirements; indoor only.

❖ Driving with cannabis

- Having an open container of cannabis while driving or riding in a vehicle is illegal.
- If you have cannabis in a vehicle, it must be in either:
 - A sealed package or container
 - In the trunk of the vehicle
- Law enforcement officers can pull you over to conduct a sobriety test if they suspect you are operating a car, boat or other vehicle under the influence of cannabis.

THANK YOU!

Please follow us



Catalyst - El Monte
[@catalyst_elmonte](#)



Catalyst Cares
[@catalyst.cares](#)



Catalyst El Monte IG:
[catalyst_elmonte](#)



Catalyst Cares IG:
[catalyst.cares](#)

STORE CODE LICENSE # BLM - C10-0000227-LIC; CHR - C10-0000525-LIC; BFL - C10-0000376-LIC; SAA - C10-0000230-LIC; EAST - C10-0000364-LIC; DTLB - C10-0000801-LIC; FLO - C10-0000865-LIC; ELM - C10-0000885-LIC; POM - C10-0000903-LIC; MAR - C10-0000915-LIC; PALM - C10-0000937-LIC; HEM - C10-0001020-LIC; SBRD - C10-0001021-LIC